








# 1. Änderung Bebauungsplan "Hohenkammer Nord"

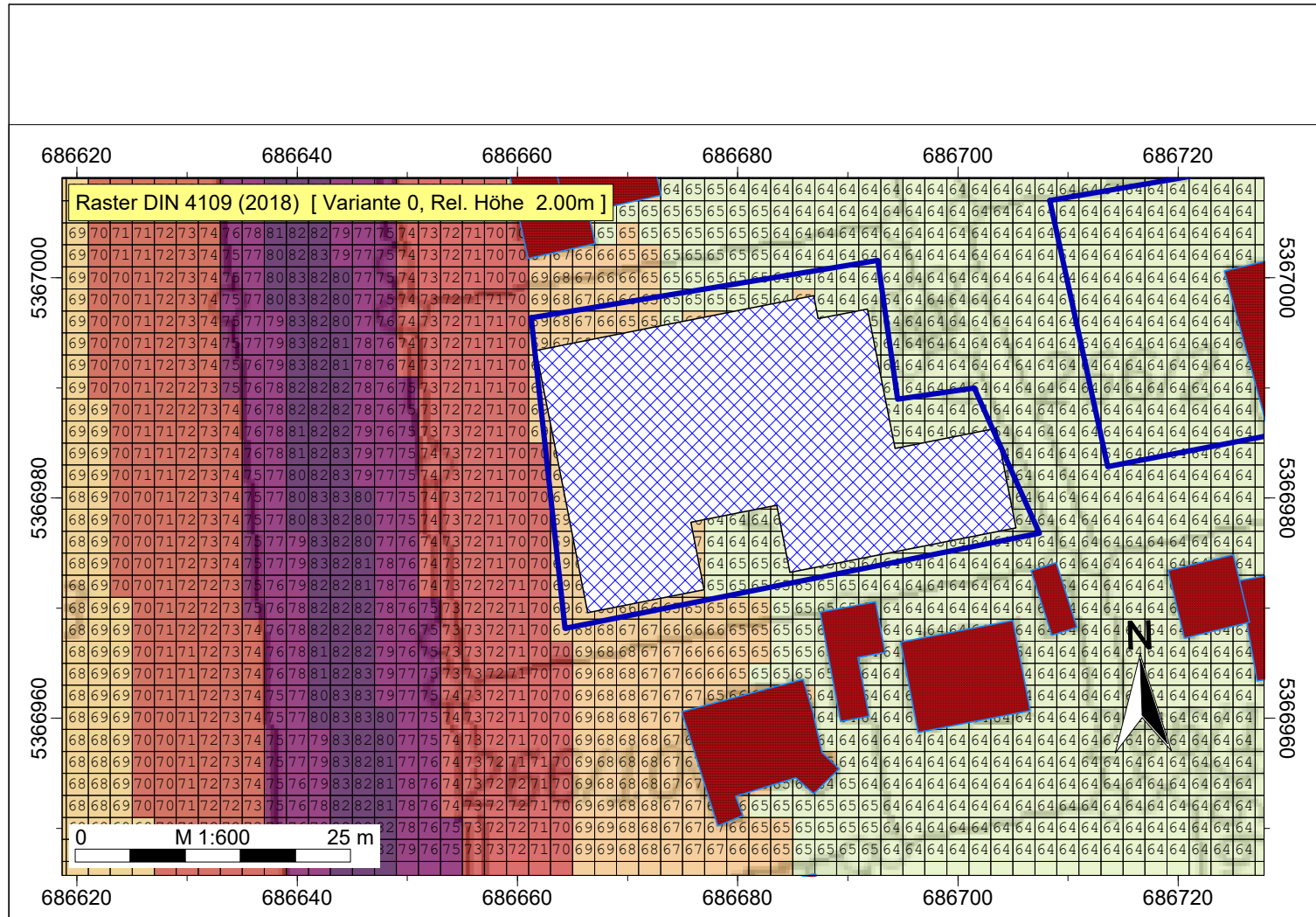
IFB Eigenschenk GmbH  
Martina Haasler B. Eng.

1. Änderung  
Bebauungsplan  
"Hohenkammer Nord"

Auftragsnr. 3221390

- Legende
-  Baugrenze
  -  Gebäude
  -  Neubau (HAUS)
  -  Parkplatz (PRKL)
  -  Punkt-SQ /ISO 9613
  -  LKW (LIQi)
  -  Supermarkt (FLQi)
  -  Flächen-SQ/DIN 45691
  -  Fahrzeugreparatur Kistler (FL)

- DIN 4109 (2018)  
MALP (Maximum)  
dB
-  I -55 dB(A)
  -  II 56-60 dB(A)
  -  III 61-65 dB(A)
  -  IV 66-70 dB(A)
  -  V 71-75 dB(A)
  -  VI 76-80 dB(A)
  -  VII >80 dB(A)



# 1. Änderung Bebauungsplan "Hohenkammer Nord"








IFB Eigenschenk GmbH  
Martina Haasler B. Eng.

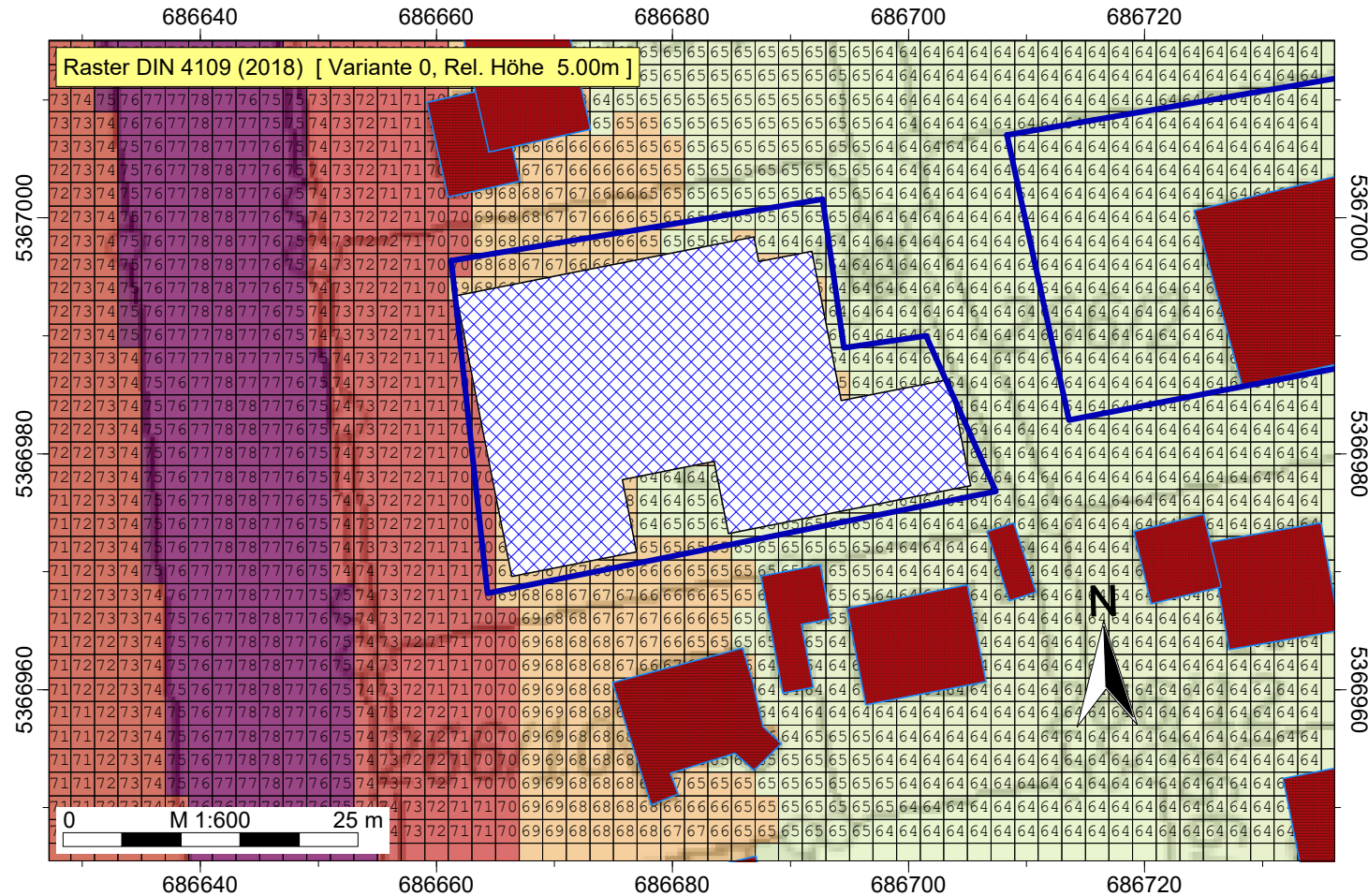
1. Änderung  
Bebauungsplan  
"Hohenkammer Nord"

Auftragsnr. 3221390

- Legende
-  Baugrenze
  -  Gebäude
  -  Neubau (HAUS)
  -  Parkplatz (PRKL)
  -  Punkt-SQ /ISO 9613
  -  LKW (LIQi)
  -  Supermarkt (FLQi)
  -  Flächen-SQ/DIN 45691
  -  Fahrzeugreparatur Kistler (FL)

DIN 4109 (2018)  
MALP (Maximum)  
dB

-  I -55 dB(A)
-  II 56-60 dB(A)
-  III 61-65 dB(A)
-  IV 66-70 dB(A)
-  V 71-75 dB(A)
-  VI 76-80 dB(A)
-  VII >80 dB(A)

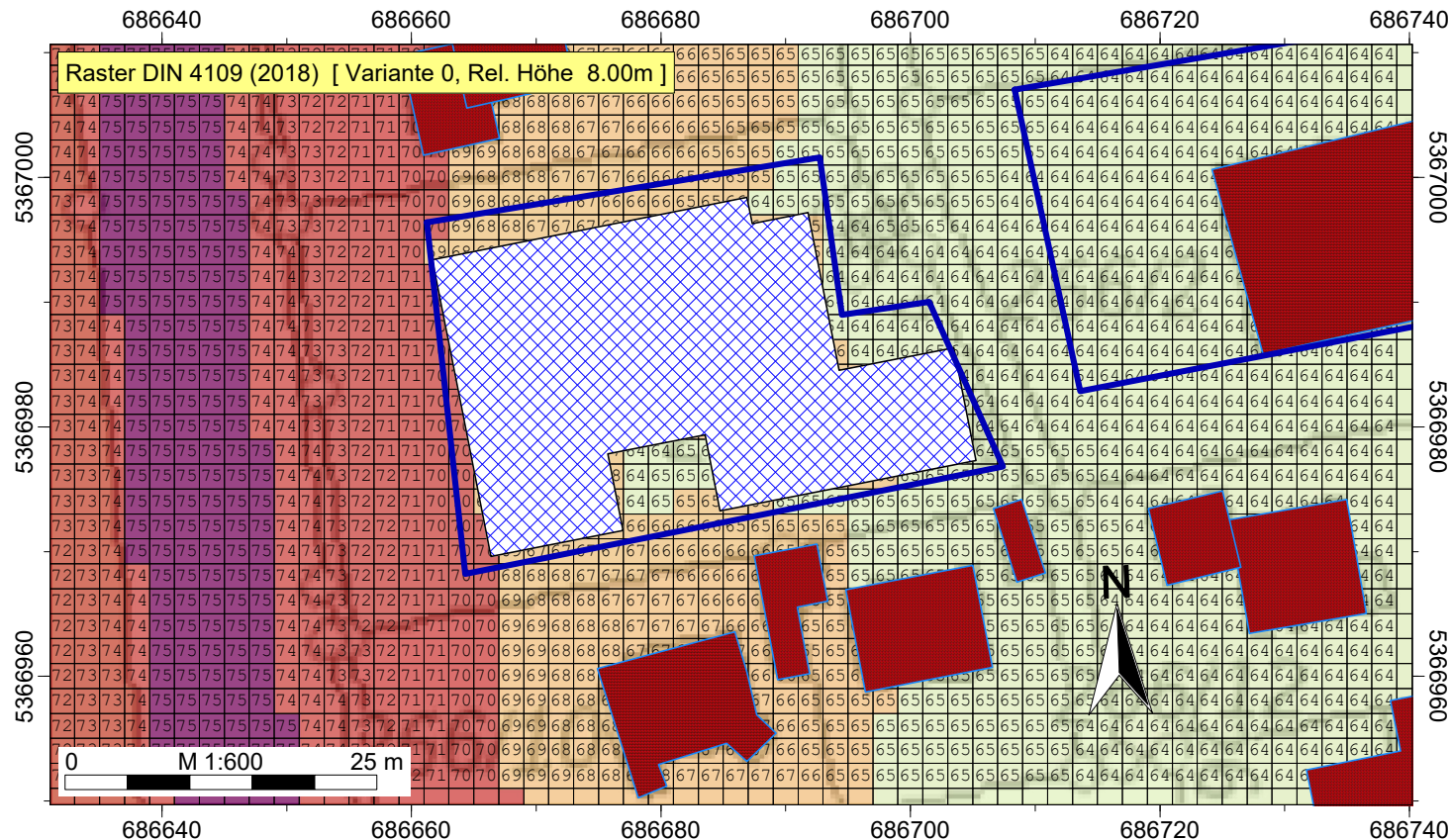


# 1. Änderung Bebauungsplan "Hohenkammer Nord"

IFB Eigenschenk GmbH  
Martina Haasler B. Eng.

1. Änderung  
Bebauungsplan  
"Hohenkammer Nord"

Auftragsnr. 3221390



## Legende

- Baugrenze
- Gebäude
- Neubau (HAUS)
- Parkplatz (PRKL)
- Punkt-SQ /ISO 9613
- LKW (LIQi)
- Supermarkt (FLQi)
- Flächen-SQ/DIN 45691
- Fahrzeugreparatur Kistler (FL)

## DIN 4109 (2018) MALP (Maximum) dB

- I -55 dB(A)
- II 56-60 dB(A)
- III 61-65 dB(A)
- IV 66-70 dB(A)
- V 71-75 dB(A)
- VI 76-80 dB(A)
- VII >80 dB(A)

